
File Server **Serv-U**



Copyright © 1995-2009 Rhino Software, Inc. All Rights Reserved.
P.O Box 53, Helenville, WI 53137 ● www.RhinoSoft.com ●



File Server Serv-U

**Making File Sharing
Easier and Safer than Ever Before**

When someone is looking to use a file server to improve their family or company's access to files, such as pictures and videos from family events or important technical documents, it just has to work; and the new Serv-U 8 makes this easier than ever. With ease of accessing files, new ways of securing file transfers, and two new methods of server access, your files are available anytime, anywhere.

Accessibility and Setup

The first and foremost concern when implementing a file server is ease of configuration and maintenance. The Serv-U File Server implements an intuitive, powerful interface for administrators. Upon installation, new administrators are greeted with a setup wizard that gets the server running in mere minutes, allowing anyone from a computer professional to a family friend to access, upload, and download whatever files they need.

Corporate administrators can take advantage of Remote Administration to configure Serv-U on the fly via the web. Additionally, Serv-U is translated into 12 different languages, helping users understand it and utilize all aspects of the program no matter what their primary language. Finally, support for connections using the FTP, FTPS, HTTP, HTTPS, and SFTP protocols provides a vast array of methods to connect. A list of the features translated into each language can be found at the link

<http://www.Serv-U.com/MultiLanguage.asp>.

Copyright © 1995-2009 Rhino Software, Inc. All Rights Reserved.
P.O Box 53, Helenville, WI 53137 ● www.RhinoSoft.com ●



User Management

When creating users it is important to assign the appropriate access to the correct user. The different methods for storing users are:

- ✱ *Domain Users* - Defined at the Domain level, Domain Users can only login to the Domain under which they are created.
- ✱ *Global Users* - Defined at the Server level, Global Users are accounts that can login to **any** Domain on the File Server.
- ✱ *Database Users* - Available at both the Server and Domain level, Database Users are stored in an external database accessible through ODBC and supplement the local account database.
- ✱ *Windows Users* - Defined at the Domain level, Windows Users are Windows accounts either on the local system or accessible through a domain controller that supplement the local account database and allows a client to login to the File Server using their Windows login credentials.

File Server
Serv-U

Since global users can login to any domain on the server they can be used as administrative user accounts or accounts for domains with overlapping resources. In an external database using ODBC, the local Windows user account database should be used. Users may be designated for all domains by defining them at the server level, or just for a single domain by defining them at the domain level. A hierarchy is used by Serv-U to determine which account takes precedence. The user storage types listed above are listed in the order of precedence. Where user accounts can be specified at both the domain and server levels, the domain level account always takes precedence.

When a user is created they can be added to a group in order to give them different attributes that they would share with the other members of the group, including home directory and welcome messages. When a user is connected using a dynamic IP address the address can be added to provide access to that user, without hassle.

User Management

Another important feature to note in the setup of user accounts is the directory access. On the server there can be one large directory that only the administrator has access to, and then in that folder there are smaller directories that specific groups or users can have access to. This helps organize a company's file sharing by allowing only certain people or groups access to certain files like finance or employee records, thus eliminating unauthorized access to sensitive files. With directory access most folders are used via a physical path, but with Serv-U "Virtual Paths" can be created to allow users or groups to access different sub-directories that they wouldn't be able to enter because they don't have permission to use the higher directory. This virtual pathway allows for seamless access to directories and sub-directories that different users need to use. As with user accounts, directory access rules and virtual paths can be specified at the Domain and Server level, allowing all Users at that level to inherit these rules without having to setup a Group containing those rules and adding group membership.

File Server
Serv-U

Another way for an administrator to control their server is to set limits for each user or for each group. There are a few types of limits, each with specific features to control the access of information. The connection limit determines how often and for how long a user is connected to the server. The connection limits can also be configured to only allow connection during a few hours of the day or a few days of the week. This can be a powerful tool in controlling resources on your server. The next administrative power is the password.

Copyright © 1995-2009 Rhino Software, Inc. All Rights Reserved.
P.O Box 53, Helenville, WI 53137 ● www.RhinoSoft.com ●



User Management

The password can be limited by settings including complex characters, length, expiration of the password, and encryption. All of these limits or requirements for passwords protect the security of the user and the server. The next limit is applied to the directory and how it is presented and how it functions. There are options for the display of the folders, as well as options regarding Windows shortcuts, and locking a user in their home directory. Finally the Data Transfer limits concern the speed of transfers to and from the server. All of these are ways the Administrator can manage users.

File Server
Serv-U

Another feature that can be used in keeping the server and the company working smoothly is the domain and server activity access that administrators have. In this area of Serv-U the administrator can view what each currently logged on user is accessing, what IP they are using, and how long they have been idle or active on the server.

From this screen the administrator has the ability to spy on users and see exactly what they are viewing. If it is something they should not be viewing the administrator has the capability to disconnect the user for either one session, a set amount of time, or the IP address can be blocked permanently.

This information can be used to audit different users because of their server activity. The administrator of the server may also require encrypted connections for specific user accounts. This allows for protection of the user as well as piece of mind for the administrator that the information on the server is safe and secure. (See Session Monitoring Pg. 7).

Total Security

Most Internet users, both professional and casual, worry about their Internet security and their privacy. With the new Serv-U 7 there is no need to worry about the security of your files and information. Serv-U has a high-grade 128-bit SSL encryption for FTPS and HTTPS. It even supports **FIPS 140-2** encryption to meet the rigorous standards of many government organizations and large businesses. The Serv-U Web Client and FTP Voyager JV client both are protected by the best security possible. The administrator has all the power as to how strong the server is based on the requirements and rules he/she puts into place. The new Serv-U File Server also implements SFTP, a secure file transfer method based on the Secure Shell protocol and supports public key authentication for full support with passwordless client applications. No matter how a client is connected to Serv-U, the same settings and features are available through the same collection of user accounts.

File Server
Serv-U

Serv-U 7 also allows for the use of third party certificates for FTPS and HTTPS transfers. While Serv-U still comes pre-configured for use with a self-signed certificate to get people started with their secure file transfers, the ability to generate a certificate request has been added. This certificate request can be given to a certificate authority for signing. After the request is signed the resulting certificate can be used in Serv-U (along with the private key previously generated by Serv-U) so that it is accepted by default in FTP clients and web browsers all over the world. As stated before, the administrator has the power over how secure the server based on password limits and rules put into place. Serv-U also supports IP access for dynamic IP addresses using reverse DNS.

Copyright © 1995-2009 Rhino Software, Inc. All Rights Reserved.
P.O Box 53, Helenville, WI 53137 ● www.RhinoSoft.com ●



Total Security – Session Monitoring

One major aspect of security is session monitoring. Session monitoring is the ability of an administrator to view exactly what any user is doing on the server at any given time. At all times, the ability the administrator is great. They have total control over who has access to the server and who is banned, both users and IP addresses. Another tool the administrator may use in regards to security is to view the domain activity or server activity page. Here he/she can view the workings of the server and can see what user is doing exactly what.

File Server
Serv-U

If a problem does arise within the server or domain the Serv-U Activity display can show who accessed what and when to determine where the problem occurred. The Activity screen is a powerful tool when performing audits in regards to employee efficiency and use of resources.

Copyright © 1995-2009 Rhino Software, Inc. All Rights Reserved.
P.O Box 53, Helenville, WI 53137 ● www.RhinoSoft.com ●



The Serv-U Web Client

The Serv-U Web Client is the premier web based file transfer client for the Serv-U File Server (available in Gold Edition). The Web Client provides centralized administration, management, and deployment to an administrator, anytime and anywhere. The ability for the whole server to be online is an important one because it allows users to upload, download, delete and rename files and to create, rename and delete folders on the remote server. Allowing a user to access his/her work from home or while on vacation allows for increased efficiency and performance of any company. The Web Client also lets users view images in thumbnail form without having to download them. This makes the management and use of images more organized. With regards to images and movies the Web Client now has the ability to create streaming music playlists off the Serv-U server without having to download every song or video.

File Server
Serv-U

Unlike most web-based transfer clients, Serv-U has a download progress bar that shows the progress of each individual download. This feature allows for easy viewing and management of file downloads. Another new feature Serv-U brings to the table is the slideshow feature, which can show all of the images in a folder as a slideshow.

The Web Client is a great option for anyone who needs a file server to transfer important documents to their employees, or clients. It works great for any type of transfer that needs to be done, but for those with more familiarity with file transfer programs, more specifically FTP Voyager, there is FTP Voyager JV that works in conjunction with Serv-U.

Copyright © 1995-2009 Rhino Software, Inc. All Rights Reserved.
P.O Box 53, Helenville, WI 53137 ● www.RhinoSoft.com ●

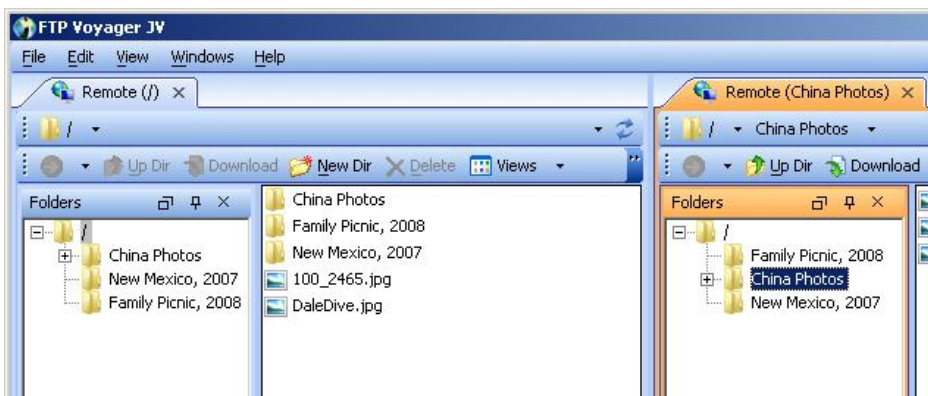


FTP Voyager JV

FTP Voyager JV was developed to relieve the hassles of assisting clients or vendors in the deployment of file transfer software. FTP Voyager JV is a Java based file transfer client that can be distributed to your clients through the Serv-U File Server. Licensing FTP Voyager JV for your Serv-U File Server ensures that all your clients have access to a powerful, familiar transfer client guaranteed to work everywhere. This eliminates headaches over support and compatibility issues as well as questions from clients without access to suitable software. Don't worry about complex software deployment schedules – configure FTP Voyager JV on your server and you're on your way to more efficient execution of business.



The FTP Voyager JV client is used by businesses who need a simple way to provide robust access to quick file uploads and downloads. By allowing users to transfer entire directories with little effort and monitor those transfers in real-time, end users no longer need to worry about installing and configuring their own client software. With the look and feel of FTP Voyager, users can jump straight in with little or no assistance.



Copyright © 1995-2009 Rhino Software, Inc. All Rights Reserved.
P.O Box 53, Helenville, WI 53137 ● www.RhinoSoft.com ●



FTP Voyager JV

Some more of the key features of FTP Voyager JV include the navigation history that keeps a separate history of the local and remote locations that are visited for easy back and forth navigation. This feature, available only through FTP Voyager JV, is one that increases productivity and speed, both of which are vital to successful business transactions. When a file or folder is transferred with a basic file server the file or folder is replicated and added to another location. With FTP Voyager JV the source of the transferred file/folder is deleted upon successful transfer. This relieves the hassle of having to delete extra folders and files that just take up valuable space on the hard drive or server.



As opposed to the Serv-U Web Client, FTPV JV doesn't have the online media player or the slideshow option to view images. However, the FTP Voyager JV client has many more features that are geared toward the business, and maintaining a smooth, rapid, efficient transfer of files. The Web Client is included in the purchase of Serv-U Gold Edition, but the FTPV JV license needs to be purchased in addition to the Serv-U. The comparison chart (<http://www.Serv-U.com/FVJV-Comparisons.asp>) can be used to decide which Serv-U client is best suited for you.

Copyright © 1995-2009 Rhino Software, Inc. All Rights Reserved.
P.O Box 53, Helenville, WI 53137 ● www.RhinoSoft.com ●

